

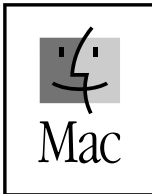


Transport Pro

FireWire and USB
Portable Hard Drive

User's Guide

<http://www.mcetech.com>



Contents

Introduction	1
Preparing to Use the Transport Pro Drive in FireWire Mode	1
Mac OS 9.1 and up	1
Mac OS 8.6 to 9.0.4	1
Using the Transport Pro Drive in FireWire Mode	2
Power	2
Connecting the Transport Pro Driver	2
Formatting and Partitioning the Transport Pro Drive	3
Disconnecting the Transport Pro Drive	4
Using the Transport Pro Drive as a Startup Drive in FireWire Mode	4
Preparing to Use the Transport Pro Drive in USB Mode	4
Mac OS 9.0.4 and up	5
Mac OS 8.6 to 9.0	5
Using the Transport Pro Drive in USB Mode ..	5
Power	5
Connecting the Transport Pro Driver	5
Formatting and Partitioning the Transport Pro Drive	6
Disconnecting the Transport Pro Drive	6
Troubleshooting the Transport Pro	7
MCE Limited Warranty	10

Introduction

Thank you for purchasing a new MCE Transport Pro Portable FireWire and USB Hard Drive. We're confident that your new device will enrich your computing experience.

Preparing to Use the Transport Pro Drive in FireWire Mode

To use the Transport Pro drive in FireWire mode, you need a Mac with a FireWire port running Mac OS 8.6 or later.

Prior to use in FireWire mode, please be sure to detach any USB cables from the Transport Pro drive. The drive can operate in FireWire mode OR USB mode, but not in both FireWire and USB mode simultaneously. Doing so may produce undesirable results, including data loss.

Mac OS 9.1 and up

The FireWire drivers installed with Mac OS 9.1 and above, including Mac OS X, are suitable for using the Transport Pro drive in FireWire mode right out of the box.

Mac OS 8.6 to 9.0.4

If you are running Mac OS 8.6 to 9.0.4, in addition to the Apple FireWire drivers included in a standard system, you must also install the FireWire drivers on the SpeedTools CD included with the Transport Pro drive. This will allow your computer to recognize and communicate with the drive.

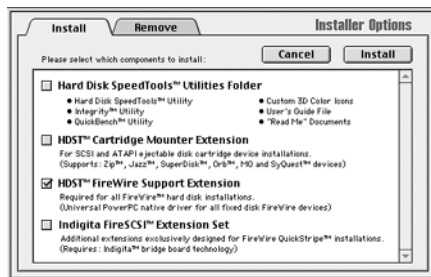


Figure A

Launch the SpeedTools™ Installer and check the HDST™ FireWire Support Extension option in the window that appears and respond to the window prompts as they appear.

Although it is not necessary for operation of your Transport Pro hard drive, you may install the Hard Drive SpeedTools™ Utilities Folder, which provides you with various helpful testing and diagnostic utility applications for use with your Transport Pro and other drives. This option is checked by default in the Installer Options window. If you prefer not to install these optional items, you may simply uncheck them.

If you are using an add-on CardBus card or PCI card to provide your FireWire ports, you may also need to install software from the manufacturer of the card to use it with the Transport Pro hard drive. Check the documentation that came with the card.

Using the Transport Pro Drive in FireWire Mode

Power

If you are using the Transport Pro drive with a computer that has an add-on CardBus or PCI FireWire card, then you need to use the supplied AC adapter to power the drive. Simply attach the AC adapter to the drive and wait for its power light to glow and for the drive to begin to spin. You're then ready to connect the Transport Pro drive to your computer.

If you are using the Transport Pro drive with a computer that has built-in FireWire ports, it is not necessary to use the optional AC adapter since the computer will supply power to the drive through the FireWire cable.

Connecting the Transport Pro Drive

The Transport Pro hard drive can be connected to your computer while the computer is powered on or off.

Simply attach one end of the FireWire cable that came with the drive into

an open port on the back of the Transport Pro drive. Connect the other end of the FireWire cable into an open port on your computer or FireWire adapter.

If the computer has built-in FireWire and is powered on, the Transport Pro drive will begin to spin once it receives power through the FireWire cable. The drive's icon will mount onto your computer's Desktop. You can now use the Transport Pro drive.

An extra FireWire connector is included on the Transport Pro drive allowing you to daisy chain other FireWire devices from the drive.

If for some reason the Transport Pro drive has not been previously formatted, a dialog box will appear after connecting the drive. The dialog box will ask if you would like to initialize the drive. Simply select a format option (Mac OS Extended is generally selected over Mac OS Standard format), name the volume as desired, then click Initialize. After several moments, the drive will mount onto your computer's Desktop and is ready for use.

Formatting and Partitioning the Transport Pro Drive

Under Mac OS X, you may format or partition the Transport Pro drive while in FireWire mode by using the Disk Utility application in the Utilities folder which is inside the Applications folder.

If you wish to format or partition the Transport Pro drive under Mac OS 9.x or earlier, you need to run the Hard Disk SpeedTools application to do so. It's also necessary for the HDST™ FireWire Support extension to be installed in the computer's System Folder in order for the SpeedTools application to see the Transport Pro drive on the FireWire bus.

You may install both the Hard Disk SpeedTools application and the HDST™ FireWire Support extension onto your computer from the Hard Disk SpeedTools CD that came with your Transport Pro drive.



Caution: Some of these procedures will destroy the data on the drive. Please refer to the utility application's documentation.

Disconnecting the Transport Pro Drive

When you are done using the Transport Pro drive and would like to disconnect it from the computer while the computer is still powered on, simply drag the drive's icon(s) into the Trash. This will remove the drive's icon from the Desktop. Or you may highlight the Transport Pro's icon(s) and then select Eject (Command-E) from the File pulldown menu in the Mac OS X Finder or Put Away (Command-Y) from the File menu in the Finder of Mac OS 8.6 to Mac OS 9.x.

Once the Transport Pro drive's icon has disappeared from the Desktop you can unplug the FireWire cable from the computer's FireWire port and then from the drive. If it was used, remove the AC adapter from the drive. Your drive is now ready for *transport*!

Using the Transport Pro FireWire Drive as a Startup Drive

In order to boot from the Transport Pro drive, it must be connected to a PowerBook, Power Mac, iMac, Power Mac Cube, or iBook with a built-in FireWire port and the drive must contain an appropriate version of the Mac OS for the given computer (see Preparing to Use the Transport Pro Drive in FireWire Mode)..

Select an appropriate Transport Pro drive icon in the Startup Disk control panel, which is found in the Control Panels section under the Apple Menu. Close the control panel and restart your computer. Your computer will now boot from the Transport Pro drive as long as there is a reliable System folder on the drive and your version of Apple FireWire Support and FireWire Enabler extensions are v2.4 or later.

Preparing to Use the Transport Pro Drive in USB Mode

To use the Transport Pro drive in high-speed USB 2.0 mode, you need to be connected to a USB 2.0 port while running Mac OS X.

To use the Transport Pro drive in USB 1.1 mode, you need a Mac with a USB 1.1 port running Mac OS 8.6 or later.

Prior to use in USB mode, please be sure to detach any FireWire cables from the Transport Pro drive. The drive can operate in FireWire mode OR USB mode, but not in both FireWire and USB mode simultaneously. Doing so may produce undesirable results, including data loss.

Mac OS 9.0.4 and up

The Apple USB 1.1 drivers installed with Mac OS 9.0.4 and above, including Mac OS X, are suitable for using the Transport Pro drive in USB mode right out of the box.

Mac OS 8.6 to 9.0

If you are running Mac OS 8.6 to 9.0, in addition to the Apple USB Device Extension (version 1.3.5 or later), you must also install the included MCE Transport Pro USB drivers. This will allow your computer to recognize and communicate with the drive.

Using the Transport Pro Drive in USB Mode

Power

When using the Transport Pro drive in USB mode, it is necessary to use the included AC adapter to power the drive. Simply attach the AC adapter to the drive and wait for its power light to glow and for the drive to begin to spin. You're then ready to connect the Transport Pro drive to your computer.

Connecting the Transport Pro Drive

The Transport Pro hard drive can be connected to your computer while the computer is powered on or off.

Attach the appropriate end of the USB cable (Figure B) included with the Transport Pro drive into the USB port on the back of the drive. Connect the other end of the USB cable (Figure C) into an open USB port on your computer or USB adapter. The drive's icon will mount onto your computer's Desktop and you can now use the Transport Pro drive.



Figure B



Figure C

If for some reason the Transport Pro drive has not been previously formatted, a dialog box will appear after connecting the drive. The dialog box will ask if you would like to initialize the drive. Simply select a format option (Mac OS Extended is generally selected over Mac OS Standard format), name the volume as desired, then click Initialize. After several moments, the drive will mount onto your computer's Desktop and is ready for use.

Formatting and Partitioning the Transport Pro Drive

Under Mac OS X, you may format or partition the Transport Pro drive while in USB mode by using the Disk Utility application in the Utilities folder which is inside the Applications folder.

While under Mac OS 8.6 to 9.x, you may re-initialize the Transport Pro drive by highlighting the drive on your Mac's Desktop and selecting "Erase Disk..." under the Special pulldown menu of the Finder. You may not partition the drive or perform high-level drive maintenance functions while in USB mode while operating under Mac OS 8.6 to 9.x.

Disconnecting the Transport Pro Drive

When you are done using the Transport Pro drive and would like to disconnect it from the computer while the computer is still powered on, simply drag the drive's icon(s) into the Trash. This will remove the drive's icon from the Desktop.

Another way to disconnect the drive is to highlight the Transport Pro's icon(s) on the Desktop and then select Eject (Command-E) from the File pulldown menu in the Mac OS X Finder or Put Away (Command-Y) from the File menu in the Finder of Mac OS 8.6 to 9.x.

Once the Transport Pro drive's icon has disappeared from the Desktop you can unplug the USB cable from the computer's USB port and then from the drive. Remove the AC adapter from the drive. Your drive is now ready for *transport!*

Important Usage Note

The Transport Pro hard drive is designed to withstand the normal, reasonable handling involved with mobile use. It is not designed to handle excessive shock such as that experienced in dropping, pounding, banging or otherwise smashing the drive. Exercise care when handling the drive and it will provide you with reliable and extended storage capabilities.

Troubleshooting

This section offers general advice on common issues which may arise while using the Transport Pro FireWire and USB Hard Drive. Also, keep in mind that MCE suggests using the latest versions of relevant Apple drivers and extensions. Check manufacturers web sites for the latest updates and support issues involving relevant products.

The Transport Pro drive does not mount onto the Desktop.

- *Check cable connections.* Make sure the Transport Pro's FireWire or USB cable is firmly connected to both your Transport Pro and your computer.
- *Make sure power is properly connected.* If you're using the Transport Pro drive in USB mode or in FireWire mode with add-on CardBus or PCI Card-based FireWire ports, then it is necessary to use the AC adapter that was included with your Transport Pro drive to supply power to the drive. Make sure the AC adapter is correctly connected to a powered electrical outlet and to your Transport Pro drive. If your computer has a built-in FireWire port and

therefore does not need the AC adapter for power, then make sure the FireWire cable is firmly connected to both the Transport Pro and the computer for power. In either situation, the green LED on the Transport Pro should be illuminated without interruption when power is being properly supplied.

- *Make sure proper software is installed.* While using the drive in FireWire mode, you should have the Apple FireWire Support and FireWire Enabler extensions enabled. Users of Mac OS 9.0.4 or earlier should also have the HDST™ FireWire Support extension installed and enabled. While in USB mode make sure the USB Device Extension is enabled. If using Mac OS 8.6 or 9.0, make sure that the MCE USB drivers are enabled as well. If you have a computer with add-on CardBus or PCI card FireWire or USB ports, then you should also have the relevant software drivers for this card enabled.
- *Wait for a moment.* Once you connect the Transport Pro to your computer's FireWire or USB port, it may take several moments for your computer to recognize that a device has been attached, then load the appropriate drivers, then finally access and mount the Transport Pro drive. This may take up to 30 seconds or so.

Computer freezes or hangs while transferring data using the Transport Pro drive.

- *Check cable connections.* Make sure the Transport Pro's FireWire or USB cable is firmly connected to both your Transport Pro and your computer.
- *Make sure power is properly connected.* If you're using the Transport Pro drive in USB mode or in FireWire mode with add-on CardBus or PCI Card-based FireWire ports, then it is necessary to use the AC adapter that was included with your Transport Pro drive to supply power to the drive. Make sure the AC adapter is correctly connected to a powered electrical outlet and to your Transport Pro drive. If your computer has a built-in FireWire port and

therefore does not need the AC adapter for power, then make sure the FireWire cable is firmly connected to both the Transport Pro and the computer for power. In either situation, the green LED on the Transport Pro should be illuminated without interruption when power is being properly supplied.

- *You may have an extension conflict.* If you are using a system with built-in FireWire ports, then boot from a Mac OS CD and attempt the file transfer again. If you have a computer with add-on CardBus or PCI card FireWire ports, then boot your computer with a bare System folder consisting of *only* Apple and other relevant FireWire driver extensions and attempt the transfer again. If it goes smoothly then you are going to need to find and disable the conflicting extension in your hard drive's System folder. It is most likely a third-party FireWire storage device extension or control panel.

If you have exhausted all of the troubleshooting recommendations outlined here and still have not resolved the problem with your new hard drive, you may receive technical assistance by calling (949)458-0800 or by sending an email to support@mcetech.com. Please provide the following information:

- Your name
- Date of the invoice
- PowerBook model
- Description of the problem, including any relevant error messages
- Invoice number
- MCE part number
- Mac OS version number

Since technical assistance representatives do not have access to invoice information, it is necessary that you have this information with you when contacting them.

MCE Limited Warranty

This is your MCE Technologies, LLC (MCE) one year limited warranty. The original purchaser (Purchaser) must present proof of purchase and proof of purchase date (Bill of Sale) to obtain warranty service.

The MCE product is warranted by MCE to be free from defects in material and workmanship for one (1) year from the date of purchase by the Purchaser.

Purchaser's sole remedy under an MCE warranty shall be, at MCE's sole election, refund, repair or replacement as provided in this warranty. An MCE warranty shall not apply to any failure or defect caused by misuse, abnormal use, neglect, abuse, alteration, improper installation, unauthorized repair or modification, improper testing, accident or causes external to the product such as but not limited to excessive heat or humidity, power failure, or surges, or improper installation, or damage arising from improper packaging during transport; and damage resulting from causes, including without limitation, lack of technical skill, competence, or experience of the user. This warranty shall not be enlarged, diminished or affected by, and no liability shall arise out of, MCE's rendering of technical advice or providing information to Purchaser. Service by anyone other than MCE authorized service personnel voids any MCE warranty. MCE makes no representations or warranties, express or implied, regarding the fitness of a product for any particular purpose, or that a product is compatible with any particular hardware or software.

MCE's sole and exclusive maximum liability for any claim by Purchaser arising out of Purchaser's purchase of a product and/or the above warranty shall not in any event exceed the actual amount paid by Purchaser for the product. In no event shall MCE be liable for any direct, indirect, incidental, collateral, exemplary, consequential or special damages or losses arising out of Purchaser's purchase and/or use of products, including, without limitation, loss of use, profits, goodwill or savings, or loss of data, data files, or programs that may have been stored by a user of the product. Continued use or possession of a product after expiration of its warranty period shall be conclusive evidence that the warranty is fulfilled to the full satisfaction of Purchaser.

MCE shall honor the terms of an MCE warranty as described herein, provided that the defective product is sent in its original packaging to MCE, together with a copy of the invoice on which the product appears, transportation and insurance prepaid, within the warranty period, and if the product is found by MCE to be defective within the terms of the warranty. Prior to returning any product to MCE, Purchaser must obtain a Return Merchandise Authorization (RMA) number from MCE. No product shall be accepted for return, repair or replacement without an RMA number visibly written on the outside of its original packaging or comparable packaging affording an equal degree of protection. MCE does not pay shipping charges for merchandise shipped back to MCE. Prior to returning the product, Purchaser must, if possible, remove any and all programs and data from any storage media. Replacement products and parts used to repair products may be similar new or other than new items. Replaced products and parts shall become the property of MCE. If any product returned by Purchaser to MCE for repair or replacement is not defective within this warranty, MCE shall so advise Purchaser and thereafter MCE shall handle such products in accordance with Purchaser's instructions and at Purchaser's cost, after reimbursement to MCE by Purchaser of freight charges at then current rates, and examination and testing expenses at then current rates (\$60.00 per hour as of January 2001). Prices, terms and conditions are subject to change without notice.

Non-defective purchases which are returned to MCE must be returned within thirty (30) days of purchase. For non-defective purchases which are returned or refused by the Purchaser, MCE will, at its discretion, issue a credit or refund for the purchase price of the goods, less all shipping charges incurred in the shipment and a restocking fee of no less than fifteen percent (15%) of the price of the goods.

**MCE Technologies, LLC
Irvine, California, USA**

**Technical Support
(949)458-0800
support@mcetech.com**

**Sales
(800)500-0622
sales@mcetech.com**

<http://www.mcetech.com>

Copyright © 2001 MCE Technologies, LLC. All rights reserved.

MCE, the MCE logo, and Transport Pro are trademarks of MCE Technologies, LLC.

Apple, Mac, the Mac OS logo, Macintosh, PowerBook, iBook, and Drive Setup are trademarks of Apple Computer, Inc. registered in the U.S. and other countries.

Products and company names are trademarks of their respective companies, and are mentioned for informational purposes only and constitute neither an endorsement nor a recommendation.

Every effort has been made to ensure that the information in this manual is accurate. MCE Technologies, LLC is not responsible for printing or clerical errors. Information in this document is subject to change without notice and does not represent a commitment on the part of MCE Technologies, LLC.